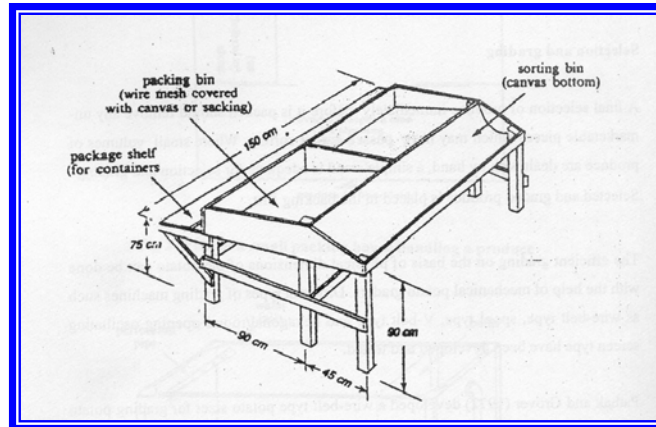
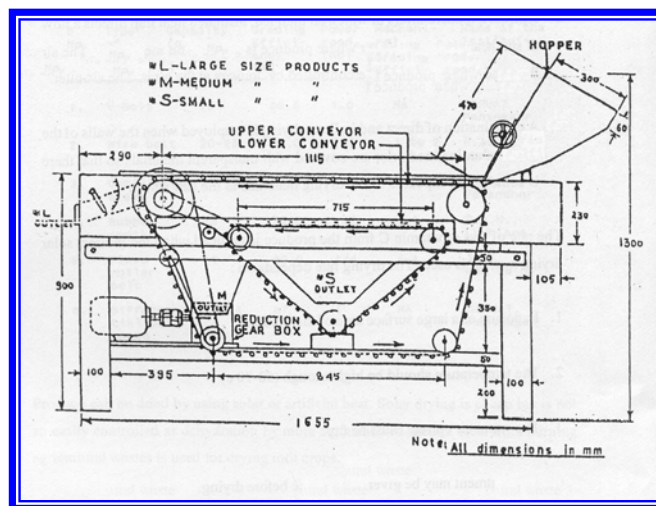


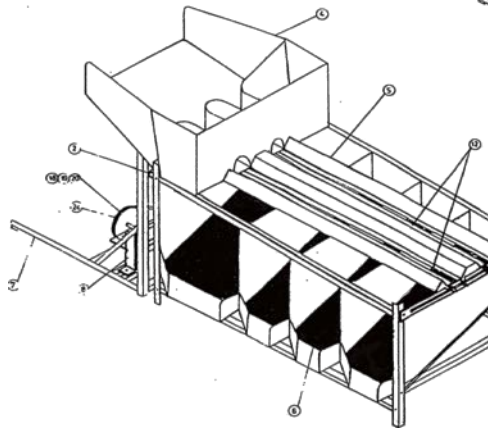
## CHAPTER 19: GRADING – METHODS OF GRADING, EQUIPMENTS FOR GRADING OF FRUITS AND VEGETABLES, CARE AND MAINTENANCE



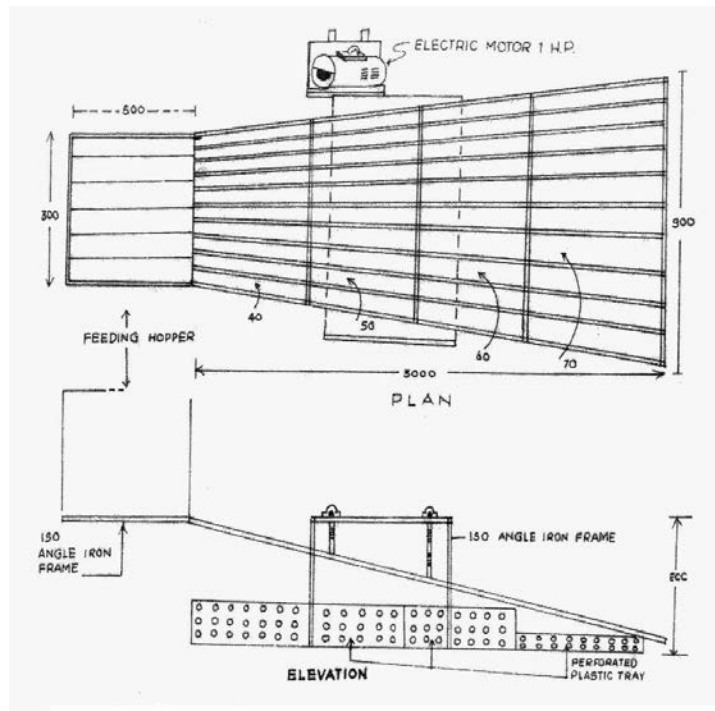
**Sorting Bench**



**IARI Fruit and Vegetable Grader**

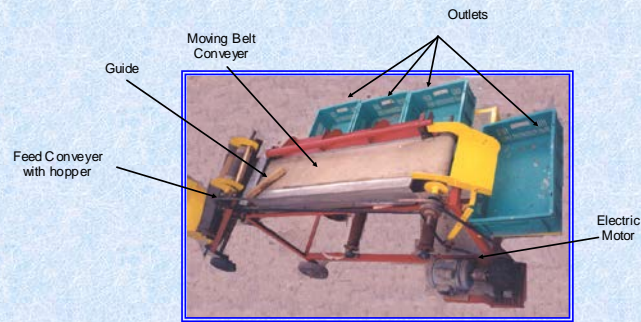


**Divergent roller type fruit sorting machine for lemon and sapota, MPKV, Rahuri**



**Divergent rails/slit size mango grader.CISH, Lucknow**

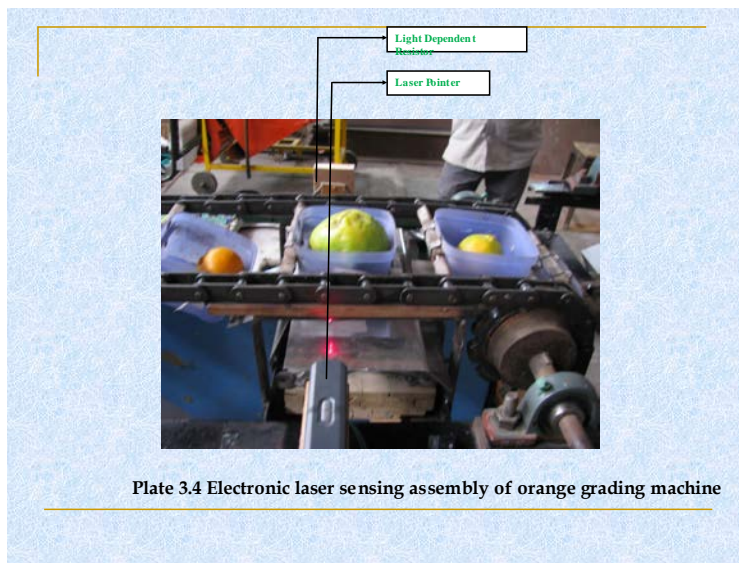
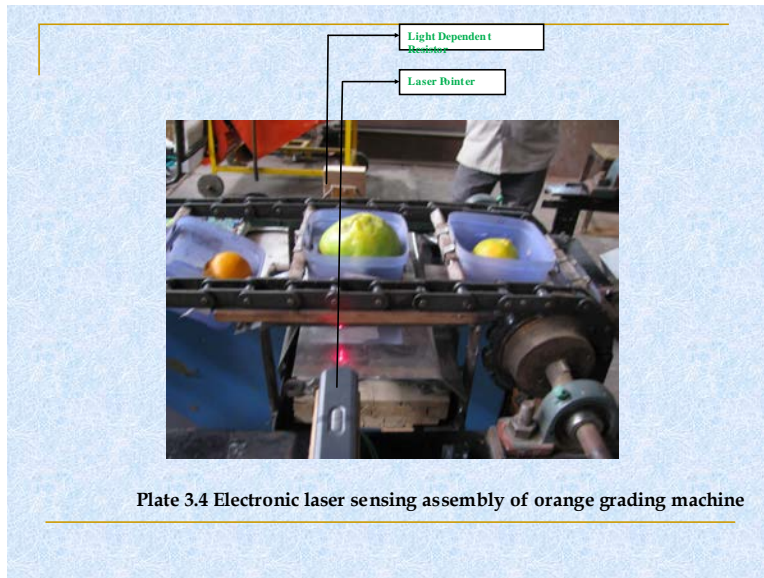
## Fruit and Vegetable Grader for Tomato & Mango



**Capacity** = 500 Kg/h  
**Power requirement** = ½ HP electric motor  
**Efficiency** = 85 – 90%

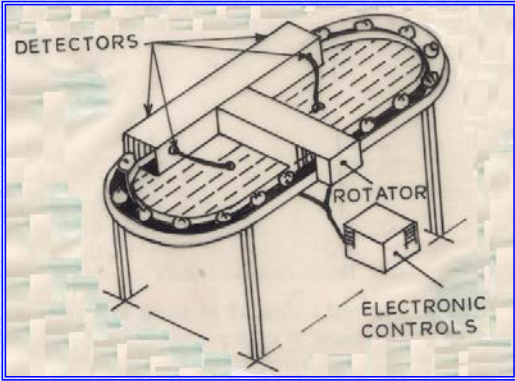


Plate 3.5 Orange grading (weight basis) machine in operation



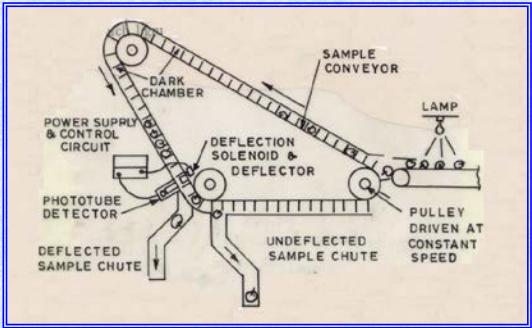
# Optical Grader for Apples

(Colour Grading)



# Optical Grader for Fruits

(Delayed Light Emission)





Mango grader

## Potato grader

### Features

- Capacities range from 5 tonne/hr to 30 tonne/hr
- Washing
- Dry brushing lines
- Sizing
- Bagging lines





## Onion grader

### Features

- Capacities range from 8 tonne/hr to 30 tonne/hr
- Bulk receiptal
- Top and tailing
- Sizing
- Bagging lines



Sweet Potato Sorter



Electronic sizer for sweet potato



**Grader for sweet potato**

## Belt grader

- Used to separate round from other shaped seeds/parts or weeds in flower, herb, tree, cactus and vegetable seeds.
- For vegetable seeds separation of triangular or sharp shaped seed from round spinach seed





## Indented cylinder grader

- Used for separating plant parts and weeds in carrot, onion and lettuce, but also for flower seeds like marigold and impatiens.
- Used for calibrating the seeds based on their length to obtain more uniformity to produce seed pellets

